

Facts 2020–2021

MIT LINCOLN LABORATORY

MIT LINCOLN LABORATORY

Facts 2020–2021



244 Wood Street
Lexington, MA 02421-6426
781-981-5500
www.ll.mit.edu

Contents

1	Overview
2	What is an FFRDC?
2	Historical Brief
4	Funding
5	Missions Areas and Research
5	Mission Areas
7	Major Capabilities of Lincoln Laboratory
8	Research Initiatives
9	Organization
9	Technical Divisions
9	Service Departments
10	Working at Lincoln Laboratory
10	Technical Positions
11	Profile of Professional Technical Staff
12	Professional Development
13	Diversity and Inclusion
14	Work-Life Balance
16	Facilities and Field Sites
16	Facilities
24	Field Sites
24	Field Offices
26	Technology Transfer
27	Spin-off Companies
28	Patents
28	Subcontracts with Business and Universities
30	Collaborations with MIT Campus and Other Universities
30	Research
31	Advanced Education
36	Workshops and Technical Education
36	Workshops at Lincoln Laboratory
39	Offsite Workshops
40	Technical Education Courses—Invited
41	Technical Education—Online Courses
42	Community Outreach
42	Educational Outreach
45	Community Service and Giving
48	Contacts

© 2020 Massachusetts Institute of Technology

MIT Lincoln Laboratory Facts is published by MIT Lincoln Laboratory and prepared by the Lincoln Laboratory Communications and Community Outreach Office.

Comments and requests may be sent to llnews@ll.mit.edu.

MIT Lincoln Laboratory's fundamental mission is to apply science and advanced technology to critical problems of national security. To assure excellence in the fulfillment of this mission, the Laboratory is committed to fostering an environment that embraces and leverages diversity of thought, culture, and experience.

Approved for public release; distribution is unlimited. This material is based upon work supported by the United States Air Force under Air Force Contract No. FA8702-15-D-0001. Any opinions, findings, conclusions or recommendations expressed in this material are those of the author(s) and do not necessarily reflect the views of the United States Air Force.

Quick Facts

MIT Lincoln Laboratory is a Department of Defense federally funded research and development center.

Established

1951

Research areas

Sensors, data extraction (signal processing and embedded computing), bioengineering, communications, integrated sensing and decision support, advanced electronics, cyber security, artificial intelligence

Major sponsors

U.S. Air Force, U.S. Army, U.S. Navy, Missile Defense Agency, Defense Advanced Research Projects Agency, Under Secretary of Defense for Research and Engineering, NASA, Federal Aviation Administration

Director

Dr. Eric D. Evans

Personnel

1,820 professional technical staff; 479 technical support staff; 1,247 support staff; 510 technical and technical support subcontractors; 4,056 total personnel

Facility profile

Located on 4 sites—two facilities in Lexington, Mass.; Flight and Antenna Test Facility on Hanscom Air Force Base in Bedford, Mass.; Millstone Hill radar complex in Westford, Mass.

Field Sites: 2

Field Offices: 10

U.S. patents issued to Lincoln Laboratory technical staff since 1951

1,127

Spin-off companies since 1951

106

Overview

MIT Lincoln Laboratory is a Department of Defense (DoD) federally funded research and development center working on problems critical to national security. The Laboratory's core competencies are in sensors, information extraction (signal processing and embedded computing), communications, cyber security, integrated sensing, and decision support.

Technology development is geared to the Laboratory's primary mission areas—space control; air, missile, and maritime defense; communication systems; intelligence, surveillance, and reconnaissance systems; advanced electronics; tactical systems; homeland protection; cyber security; and air traffic control.

Two of the Laboratory's principal technical objectives are (1) the development of components and systems for experiments, engineering measurements, and tests under field operating conditions and (2) the dissemination of information to the government, academia, and industry.

Program activities extend from fundamental investigations through the design process and finally to field demonstrations of prototype systems. Emphasis is placed on transitioning systems and technology to industry.

As a DoD Research and Development Laboratory, Lincoln Laboratory focuses on developing and prototyping innovative technologies and enhanced capabilities to meet the evolving needs of the DoD.

Lincoln Laboratory also undertakes government-sponsored, nondefense projects in areas such as the development of systems the Federal Aviation Administration relies on to improve air traffic control and air safety, and systems that the National Oceanic and Atmospheric Administration uses in weather surveillance.

What is an FFRDC?

A federally funded research and development center (FFRDC) is an independent, nonprofit entity sponsored and supported by the U.S. government to develop concepts and technologies to meet evolving long-term, and occasionally high-priority short-term, needs that cannot be met as effectively by government or contractor resources. An FFRDC conducts scientific research and analysis, prototype development, and system assessments to provide novel, cost-effective solutions to complex government problems. To ensure objectivity and foster technical excellence, an FFRDC is contractually prohibited from manufacturing products, competing with industry, or working for commercial companies.

All FFRDCs are sponsored by government departments or agencies with whom they work as strategic partners, but they are privately administered by universities and other nonprofit organizations. A strength of FFRDCs is that they draw on the expertise and perspective of government, industry, and academia. FFRDCs work in the fields of defense, energy, aviation, space, health and human services, and tax administration. Lincoln Laboratory is one of 10 Department of Defense FFRDCs.

Historical Brief

Lincoln Laboratory was established in 1951 to develop an air defense system for the United States. The Laboratory's first building was completed in 1952 and four more buildings were completed by 1954. Today, the complex,

located primarily on Hanscom Air Force Base in Massachusetts, comprises 28 facilities, including a state-of-the-art Microelectronics Laboratory.

The first project of Lincoln Laboratory was the Semi-Automatic Ground Environment (SAGE) air defense system, which was developed to collect, analyze, and relay data from multiple radars quickly enough to initiate a response if an air attack were identified. The Whirlwind computer built at MIT was at the heart of this system; the Laboratory's second-generation Whirlwind enabled transmittal and interpretation of enormous amounts of data—virtually in real time. SAGE was the beginning of the Laboratory's long history of developing innovative technology.

In 2001, Lincoln Laboratory received the Secretary of Defense Medal for Outstanding Public Service in recognition of a half-century of technical innovation and scientific discoveries.

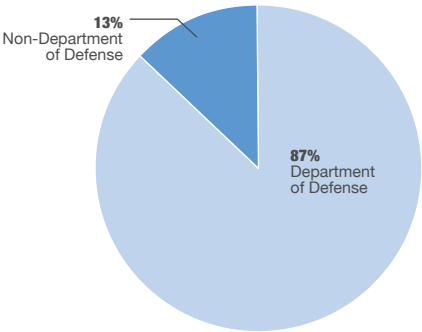
To learn more about Lincoln Laboratory's history, visit the web at <https://www.ll.mit.edu/about/history>



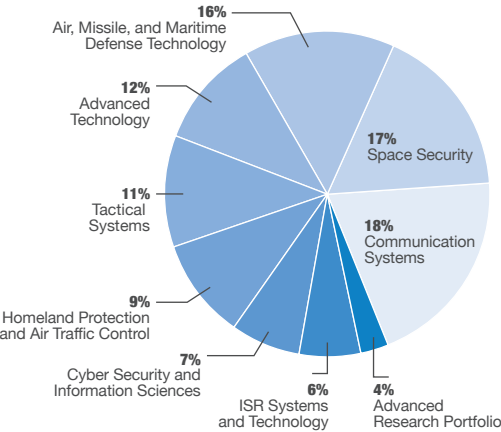
Funding

Lincoln Laboratory programs are funded by a number of DoD agencies through its prime contract with the Air Force.

Breakdown of Program Funding by Sponsor



Breakdown of Program Funding by Mission Area



Mission Areas and Research

Mission Areas

SPACE SECURITY

The goal of this mission is to ensure the resilience of the U.S. space enterprise by designing, prototyping, operating, and assessing systems to provide space situational awareness, resilient space capability delivery, active defense, and associated cross-domain battle management.

AIR, MISSILE, AND MARITIME DEFENSE TECHNOLOGY

Lincoln Laboratory researchers are investigating system architectures, prototyping pathfinder systems, and demonstrating these advanced, integrated sensor systems that are designed for use on tactical air and maritime platforms to provide defense against missile threats.

COMMUNICATION SYSTEMS

The focus of this mission area is to develop and demonstrate RF military satellite communications, free-space laser communications, tactical network radios, and quantum systems to expand and protect the nation’s global defense networks.

CYBER SECURITY AND INFORMATION SCIENCES

Lincoln Laboratory conducts research, development, and evaluation of cyber components and systems, and develops solutions for processing large, high-dimensional datasets acquired from diverse sources, including speech, imagery, text, and network traffic.

ISR SYSTEMS AND TECHNOLOGY

Lincoln Laboratory carries out research and development in advanced sensing, signal and image processing, decision support technology, and high-performance embedded computing to enhance capabilities in intelligence, surveillance, and reconnaissance.

TACTICAL SYSTEMS

The goals of this mission are to improve the development of tactical air and counterterrorism systems through systems analysis that assesses the impact of technologies on real-world scenarios; rapidly develop prototype tactical systems; and conduct precise instrumented testing of systems.

ADVANCED TECHNOLOGY

Lincoln Laboratory research teams leverage solid-state electronic and electro-optical technologies, chemistry, materials science, advanced RF technology, and quantum information science to develop innovative system applications and components.

HOMELAND PROTECTION

Lincoln Laboratory is innovating technology and architectures to help prevent terrorist attacks within the United States, to reduce the vulnerability of the nation to terrorism, to minimize the damage from terrorist attacks, and to facilitate recovery from man-made and natural disasters.

AIR TRAFFIC CONTROL

Lincoln Laboratory is developing advanced technologies and decision support architectures for aircraft surveillance, integrated weather sensing and processing, collaborative air traffic management, and information security to support the nation's air transportation system.

ENGINEERING

To support research and development across Lincoln Laboratory, staff in this mission employ their expertise in electrical, mechanical, structural, thermal, aeronautical, optical, and control systems engineering to build, integrate, and test prototype systems for applications in space control, engineering, communications, and autonomy.

For more about the Laboratory's mission areas, visit the web at <https://www.ll.mit.edu/r-d>

Major Capabilities of Lincoln Laboratory

- Adaptive signal processing
- Advanced imaging
- Advanced microelectronics and microsystems
- Advanced radar technology
- Advanced RF technology
- Artificial intelligence
- Big data analytics and architectures
- Bioengineering
- Biological/chemical agent detection and identification
- Communication systems
- Cyber security
- Decision support technologies
- Environmental monitoring
- Homeland protection systems
- Human language technologies
- Humanitarian assistance and disaster relief
- Laser communications
- Machine learning
- Optics and laser systems
- Rapid prototyping
- Space situational awareness
- Supercomputing
- Systems analysis
- Threat assessment
- Weather sensing



Research Initiatives

Advanced research and development at Lincoln Laboratory is supported through a congressionally appropriated source of funding that is administered by the office of the Under Secretary of Defense for Research and Engineering. This funding supports the development of long-term strategic technologies. Research projects are chosen to address both current and evolving critical problems in national security.

This funding fosters innovative research that often leads to further sponsored program development. It supports mission-specific research needs and the development of new initiatives. In addition, this funding finances a limited portfolio of collaborative academic research with universities. Through these collaborations, the Laboratory gains access to leading-edge research pertinent to mission-area needs, and university students have the opportunity to work on timely, relevant problems.

In 2020–2021, the Laboratory is funding novel work in optical systems and technology; cyber security; RF systems and technology; quantum system sciences; novel and engineered materials; bioengineering; autonomous systems; and energy. These technology areas provide critical capabilities that support all the DoD mission areas pursued at the Laboratory and address difficult emerging problems.

Organization

Lincoln Laboratory is led by the Director, two Assistant Directors, and the Assistant Director for Operations in conjunction with a Steering Committee consisting of the Director's Office and the heads of the technical divisions. The Laboratory reports to the MIT Office of the President. An annual review of Lincoln Laboratory is conducted by a Joint Advisory Committee composed of representatives from the Laboratory's major sponsors.

The Laboratory operates eight mission-specific technical divisions. Projects are often multidisciplinary and involve interdivisional collaborations. The technical work of the Laboratory is supported by six service departments.

Technical Divisions

Division 3—Air, Missile, and Maritime Defense Technology
Division 4—Homeland Protection and Air Traffic Control
Division 5—Cyber Security and Information Sciences
Division 6—Communication Systems
Division 7—Engineering
Division 8—Advanced Technology
Division 9—Space Systems and Technology
Division 10—Intelligence, Surveillance, and Reconnaissance and Tactical Systems

Service Departments

Contracting Services, Facility Services, Financial Services, Human Resources, Information Services, Security Services



Working at Lincoln Laboratory

Lincoln Laboratory's reputation has been built on the strength and quality of its technical staff. Approximately 1,800 professional technical staff members work on research, prototype building, and field demonstrations. The technical staff come from a broad range of scientific and engineering fields. Two-thirds of this professional staff hold advanced degrees.

The Laboratory also employs about the same number of people to provide the strong technical support, and infrastructure and administrative functions that support the research and demonstration activities behind the development of new devices and technologies.

Technical Positions

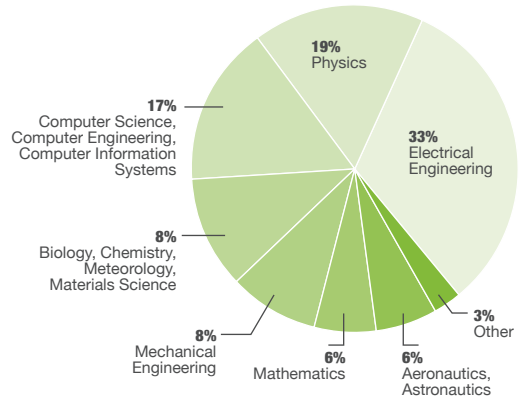
Lincoln Laboratory technical staff members come from many scientific and engineering fields; electrical engineering, physics, and computer science are three of the most common disciplines represented at the Laboratory.

Positions filled by engineers and scientists at Lincoln Laboratory require problem-solving ability, analytical skills, and creativity.

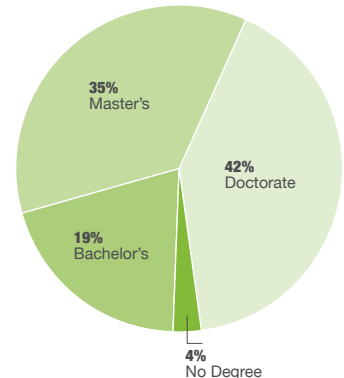
For information on available positions at Lincoln Laboratory, visit the web at <https://www.ll.mit.edu/careers>

Profile of Professional Technical Staff

Academic Discipline



Academic Degree



Continues on page 12

Professional Development

Lincoln Laboratory's commitment to the professional development of its staff is founded on the recognition that the Laboratory's extensive research and development contributions are made possible through the staff's continuing excellence and accomplishments.

To encourage professional development, the Laboratory supports a variety of opportunities for employees:

- Tuition assistance program
- The competitive Lincoln Scholars Program to enable the pursuit of advanced degrees on a full-time basis
- Part-time graduate studies program, which includes distance learning programs with universities and flexible scheduling programs at local universities
- In-house Technical Education Program
- In-house training in computer applications; seminars on topics in management
- Technical seminar series with MIT, Northeastern University, other universities, and industry
- Technical seminars on innovative work, given weekly by staff members

Support for professional activities is strong. The Laboratory encourages staff to publish in technical journals, attend conferences, and participate in activities of their professional societies. In addition, interdisciplinary projects allow staff to grow professionally.

The onsite library offers a highly focused collection of technical books, reports, and electronic journals and databases in all Laboratory technology areas. In addition, the resources of the main MIT library system are available to staff.

Diversity and Inclusion

Lincoln Laboratory is committed to diversity and inclusion in the workforce. The Laboratory recognizes that its continuing success is achieved through the appreciation and support of the diverse talents, ideas, cultures, and experiences of its employees.

The Diversity and Inclusion Office seeks to

- Recruit the best technical and support talent from the diverse national pool of candidates
- Foster a work environment built on trust and inclusion
- Develop all aspects of the Laboratory community through improved mentorship, networking, and staff development
- Adapt training and development approaches to ensure the professional growth of the Laboratory's diverse staff
- Build external and internal relationships that align with the Laboratory's diversity initiatives

Diversity and Inclusion Initiatives

- Networking groups help new employees transition to the Laboratory, promote professional development, and encourage involvement in the community. The Lincoln Laboratory New Employee Network, Women's Network, Hispanic and Latino Network, Veterans Network, Lincoln Employees' African American Network, Out Professional Employee Network, Pan-Asian Laboratory Staff Network, and Lincoln Employees with Disabilities Network are fostering an inclusive environment.
- Lincoln Laboratory's four formal mentorship programs complement efforts to create an inclusive community. The New Employee Guides program focuses on acquainting employees with their groups, divisions, or departments during their early months at the Laboratory. Staff can later choose to participate in more specialized mentoring programs:

- Early Career Mentoring provides one-on-one mentorship to help technical and administrative professionals with early career development.
- Circle Mentoring small discussion groups are led by experienced employees and address topics relevant to professional growth.
- By partnering a new assistant group leader with an experienced group leader, the New Assistant Group Leader Mentoring helps technical staff members transition into their new responsibilities

Work-Life Balance

Lincoln Laboratory recognizes that a balance between work and personal life is essential for employees' well-being. The Laboratory offers a number of services to assist employees in maintaining such a balance, as well as offering flexible work schedules, part-time employment, and telecommuting opportunities.

Childcare

The Lincoln Laboratory Childcare Center in Lexington is just 1.3 miles from the Laboratory and provides developmentally based infant, toddler, and preschool programs for children from 8 weeks to 5–6 years old. The center is one of the five Technology Childcare Centers managed by Bright Horizons and overseen by the MIT Work-Life Center.

Health and Wellness Center

The Health and Wellness Center houses a medical facility operated by MIT Medical and a fitness center. The medical center offers primary care services for members of the MIT Health Plan and brief medical assistance for employees. The Fitness Center, which all employees are eligible to join, is run by the MIT Athletic Department.

Professional and Community Enhancement (PACE) Committee

The PACE Committee helps Lincoln Laboratory's director ensure a productive workplace and a supportive and diverse community. The PACE Committee advises on decisions about the childcare facility, professional development opportunities, mentoring, and other workplace concerns.

Commuter Services

Lincoln Laboratory encourages sharing transportation to work and using public transportation through several programs that offer employees assistance with commuting:

- Van pool and car pool programs
- Guaranteed ride home program
- MBTA pass program

The Ombudspersons Program

The ombudspersons are employees who have been appointed by the Laboratory's director to help resolve employee concerns. Ombudspersons provide informal, impartial assistance that may facilitate fair and equitable resolutions of problems or disputes. Ombudspersons do not represent anyone; they act as neutral parties and respect the rights of privacy of individuals they are helping.

Personal Sustainability Interest Group

The Personal Sustainability Interest Group seeks to increase awareness of lifestyle choices that promote environmental friendliness and are of personal benefit. The group provides information and support for employees who are interested in contributing to the sustainability of the planet. At the group's monthly meetings, employees share their "green" experiences, such as adding solar panels to their homes or building an ecofriendly garden. The group also participates in Lincoln Laboratory's Earth Day fair and occasionally arranges for guest speakers to present talks on sustainability issues to the Laboratory community.



Facilities and Field Sites

Facilities

Autonomous Systems Development Facility

The Autonomous Systems Development Facility enables the development and testing of autonomy algorithms and capabilities. The 17,000-square-foot indoor test facility is housed in a building on the Hanscom Air Force Base and accommodates the prototyping and testing of ground-based, aerial, and undersea autonomous systems. Vertically retractable nets act as safety barriers and dividers that allow multiple programs to use the facility at the same time. Staff across the Laboratory use the facility to dry run systems before major outdoor field tests.

Biological and Chemical Laboratories

A variety of Biosafety Level 2 laboratories support biological and chemical R&D at Lincoln Laboratory. For wet biology needs, the labs are used for R&D in genetic sequencing, synthetic biology, microfluidics, biochemistry, virology, tissue-injury spectroscopy, and ultrasonic shear-wave testing. The facilities support the Laboratory's work in biomedical speech and hearing analysis, neurocognitive analysis, acoustic simulation, research on mild traumatic brain injury, prototyping of medical sensors, biometrics, physiological monitoring, and biomechanics.

Biophotonic, Electric, Acoustic, and Magnetic Measurement (BEAMM) Laboratory

This facility was designed for experimenting at the interface of technology and biological materials. Staff

across divisions at the Laboratory use the laboratory to support research programs, such as scanning cells with a novel hyperspectral microscope to see inside without destroying the cells or using deep learning to analyze images of tissue. The 320-square-foot laboratory is a Biosafety Level 2 facility that can support the study of human tissue and cell lines. The laboratory allows researchers to use optics, lasers, radio frequency signals, and magnetic fields to conduct their research.

Defense Fabric Discovery Center

This new prototyping facility will enable researchers from Lincoln Laboratory to develop advanced fiber and fabric technology that can provide soldiers with wearable capabilities. The center is equipped to design and produce fabrics with embedded microelectronics, enabling these fabrics to change color, store energy, emit and detect light, monitor health, or facilitate communication. Here researchers can complete all the prototyping steps under one roof. The center was built through a partnership between the Laboratory, the Commonwealth of Massachusetts, the U.S. Army Natick Soldier Research Development and Engineering Center, and the nonprofit Advanced Functional Fabrics of America at MIT.

Electronic-Photonic Integration Facility

Both Laboratory researchers and external partners use this facility to develop optoelectronic components and photonic integrated circuits, CMOS electronic integrated circuits, and hybrid electronic-photonic integrated subsystems for a variety of sensing, communication, and signal processing applications. The facility has internal capabilities for epitaxial-materials growth, fabrication, packaging, and characterization of components and integrated subsystems.

Environmental Test Laboratory

This laboratory is one of the Engineering Division's facilities used by coalition project teams for demonstrating novel ground-based, sea-based, airborne, and space-based systems. This laboratory supports both small rapid development efforts and large systems development. The laboratory's vibration systems are used for sinusoidal, random vibration, and shock-response testing. The vacuum systems test high-altitude and satellite hardware. Thermal chambers test hardware limits at hot and cold temperatures.

Flight Test Facility

The Lincoln Laboratory Flight Test Facility provides airborne platforms in support of research and development programs. The facility enables researchers to validate airborne systems with actual field-collected data. Research aircraft are flown, maintained, and managed by a professional staff of pilots, certified maintenance technicians, and administrative personnel. All flight operations are conducted using procedures and equipment that meet or exceed all Federal Aviation Administration requirements.

Integrated Weather and Air Traffic Test Facility

This facility supports the Laboratory's work on improvements in flight safety and efficiency. Among the facility's resources are a high-fidelity airport control tower simulator and a real-time operations center for various live prototype tests, including tests of the Corridor Integrated Weather System, NextGen Weather Processor, and advanced Traffic Flow Management System capabilities. The facility's computer room houses a 200+-node computer cluster and 300 terabytes of data storage used to keep the real-time systems running, as well as a large complement of computers used for analysis.

ISR PED Laboratory

The Intelligence, Surveillance, and Reconnaissance (ISR) Processing, Exploitation, and Dissemination (PED) Laboratory is a software integration facility in which researchers can develop and prototype information systems and software architectures that support decision makers. Staff working on systems for air, space, and cyber missions can create prototypes that apply machine learning and artificial intelligence to the automation of processes that transform raw data into usable information.

Lincoln Laboratory Supercomputing Center

This center is an interactive, on-demand parallel computing system that uses a large computing cluster to enable Laboratory researchers to augment the processing power of desktop systems with high-performance computational cluster nodes to process large sets of sensor data, create high-fidelity simulations, and develop entirely new algorithms.

Lincoln Research Network Operations Center (LRNOC)

The LRNOC is used to develop prototype cyber analysis tools by processing the Laboratory's own operational network traffic, security system alerts, information technology system logs, and configuration data. The LRNOC serves as a test bed for exploring and evaluating new techniques prior to prototype deployment on Department of Defense networks.

Lincoln Space Surveillance Complex

This complex in Westford, Massachusetts, has played a key role in space situational awareness and the Laboratory's overall space surveillance mission. The site comprises three major radars—Millstone Deep-Space Tracking Radar (L band), Haystack Ultrawideband Satellite Imaging Radar (HUSIR) (X and W bands), and

the Haystack Auxiliary Radar (Ku band). The Millstone Hill Radar is used for tracking space vehicles and space debris. Like Millstone, HUSIR is a contributing sensor to the U.S. Space Surveillance Network, collecting radar data on space objects.

Microelectronics Laboratory

The Lincoln Laboratory Microelectronics Laboratory is a state-of-the-art semiconductor research and fabrication facility supporting a wide range of Lincoln Laboratory programs. The 70,000 sq ft facility has 8,100 sq ft of class-10 and 10,000 sq ft of class-100 cleanroom areas.

The equipment set in this laboratory is continually updated and includes a production-class complementary metal-oxide semiconductor (CMOS) toolset with angled ion-implantation, cluster-metallization, and dry-etch equipment; chemical-mechanical planarization equipment; and rapid thermal processing and advanced lithography capabilities. A molecular-beam epitaxy system is used to provide high sensitivity and highly stable back-illuminated devices in the ultraviolet and extreme ultraviolet ranges. In addition, the Microelectronics Laboratory supports advanced packaging with a precision multichip module technology and an advanced three-dimensional circuit-stacking technology.

Optical Systems Test Facility

The Laboratory established this facility to support a broad scope of program areas, encompassing tactical ground-based sensors through strategic space-based sensors. The facility comprises several separate ranges developed as a coordinated set of test sites at the Laboratory. Currently, four separate ranges are housed in the facility: an active range (Laser Radar Test Facility), a passive range (Seeker Experimental System), an aerosol

range (Standoff Aerosol Active Signature Testbed), and an optical material measurements range.

Quantum Computing Laboratory

This laboratory consists of two facilities used by researchers who are exploring the potential of quantum physics to expand the processing performance of computers. The trapped-ion quantum computing facility contains several cryogenically cooled ultrahigh vacuum systems housing micro-fabricated chips that trap individual strontium and calcium ions above their surface. Researchers manipulate the trapped ions, using lasers and other electromagnetic fields, to perform quantum-processing operations. The superconducting quantum computing facility contains several cryogenic dilution refrigerators and microwave test and measurement equipment for controlling and measuring superconducting quantum bits (qubits) at temperatures of 20 milli-Kelvin and below.

Rapid Hardware Integration Facility

Lincoln Laboratory's 3,900-square-foot hardware-integration facility supports the rapid integration and fielding of specialized systems. It provides the appropriate tools, collaborative environment, and required infrastructure for rapidly prototyping systems.

This facility, spread over two floors, minimizes the time to iterate through the design-build-test cycle by collocating spaces for fabrication and integration. The facility is divided into areas for system integration, electronic assembly, additive manufacturing (3D printing), and conventional machining. It can accommodate the development of about five to eight systems, all with concept-to-system delivery timelines of less than 12 months.

RF System Test Facility

The antenna and radar cross-section measurements facility, constructed by Lincoln Laboratory on Hanscom Air Force Base, was designed with a rapid prototyping focus for radar and communication systems development.

There are five indoor test ranges: a small shielded chamber for electromagnetic induction measurements; two small utility ranges consisting of a tapered anechoic chamber and a millimeter-wave anechoic chamber; a compact range; and a systems development chamber that works in conjunction with an instrumentation laboratory. In addition to the chambers, multipurpose signal generation, data acquisition, and control and recording instrumentation in a systems integration laboratory provide a supporting role in the rapid prototyping of RF systems. A high-bay staging area and machine shop support the development of rapid prototype antennas. Antennas and subsystems are tested in an integrated RF system in the compact range and system test chambers.

Sensorimotor Technology Realization in Immersive Virtual Environments (STRIVE) Center

The STRIVE Center is a multimodal immersive laboratory that is used for noninvasive cognitive and physiological monitoring research. The laboratory can comprehensively quantify an individual's physical responses in realistic operational environments or rehabilitation scenarios. The facility includes the Computer Assisted Rehabilitation Environment (CAREN), a 27-foot virtual-reality dome that features 360-degree visualization; motion capture via

18 cameras; a reversible, dual-belt, high-acceleration treadmill with integrated force plates and 6-degrees-of-freedom actuation; and wearable sensors.

Sound Room

This resource allows Laboratory staff to replicate acoustic environments in a laboratory setting. Engineers can test technology, such as a voice communication or translation system, in the same conditions under which a human operator would use it. The facility's command center allows a person to control the audio signals being fed into the acoustic isolation room and to analyze the data being recorded inside. A variety of microphones and biometric devices, such as eye trackers, enable a range of research applications and human studies—for example, characterizing audio channels, studying speech patterns, evaluating machine translation systems, and testing sensors that are acoustically triggered.

Technology Office Innovation Laboratory (TOIL)

TOIL is a makerspace in which Lincoln Laboratory staff can design and build experimental hardware. TOIL allows researchers to perform early concept validation and engage in unstructured, curiosity-driven tinkering. The facility has design tools, like Solidworks and Autocad, and several manufacturing tools, including 3D printers, laser cutters, and traditional machining systems. Engineers can characterize the behavior of their hardware with spectrum and network analyzers, oscilloscopes, waveform generators, and other electronics. In TOIL, staff can rapidly prototype innovative devices or create custom components for new systems.

Field Sites

Reagan Test Site, Kwajalein Atoll, Marshall Islands

Lincoln Laboratory serves as the scientific advisor to the Reagan Test Site at the U.S. Army Kwajalein Atoll installation located about 2,500 miles WSW of Hawaii. Twenty staff members work at this site, serving two- to three-year tours of duty. The site's radars and optical and telemetry sensors support ballistic missile defense testing and space surveillance. The Laboratory also supports upgrades to the command-and-control infrastructure of the range to include applications of real-time discrimination and decision aids developed as a result of research at the Laboratory.

Experimental Test Site, White Sands Missile Range, New Mexico

The Experimental Test Site (ETS) is an electro-optical test facility located on the grounds of the White Sands Missile Range in Socorro, New Mexico. Situated next to the U.S. Air Force's Ground-based Electro-Optical Deep Space Surveillance field site, the ETS is operated by the Laboratory for the Air Force. The principal mission of the ETS is the development, evaluation, and transfer of advanced electro-optical space surveillance technologies. It is a national resource that supports measurements and operational surveillance tasking for programs such as those involving near-Earth and deep-space objects.

Field Offices

- Aviation Liaison Office, Washington, D.C.
- Colorado Springs Field Site, Colorado
- Crystal City Field Site, Arlington, Virginia
- Fort Meade Field Site, Annapolis Junction, Maryland
- Ground-based Electro-Optical Deep Space Surveillance

and Space Surveillance Telescope Field Sites, Socorro, New Mexico

- Huntsville Field Site, Alabama
- Nevada Field Site, Henderson, Nevada
- Space and Missile Systems Center Liaison Office, El Segundo, California
- U.S. Transportation Command, Scott Air Force Base, Illinois
- Vandenberg Air Force Base Field Office, Vandenberg Air Force Base, California



Technology Transfer

Lincoln Laboratory has a long history of promoting technology transfer to the defense and civil sectors. Many technologies initially developed to support Department of Defense needs have been adopted for commercial use. For example, optical projection lithography at 193 nm, pioneered by Lincoln Laboratory, became the industry standard by the early 2000s and remains the prevailing patterning technique used for critical-level integrated circuit device fabrication.

Lincoln Laboratory's focus on adapting and demonstrating new, advanced capabilities to enhance existing systems results in important technology transfer opportunities. A common strategy for achieving transition is to share the "architectural recipe" and work with commercial component and subsystem suppliers to assure that technology advances demonstrated by the Laboratory can be duplicated by industry.

One reason for the Laboratory's success in transferring technology is its participation in sponsor-supported programs with industry. Such programs complement the Laboratory's work on developing and prototyping new device concepts.

Transfer of technology is accomplished in several ways as circumstances allow:

- Direct transfer of designs and specifications
- One-on-one technical meetings

- Funded industrial development of Lincoln Laboratory–designed subsystems
- Open technical seminars
- Industry-wide workshops in areas of the Laboratory's expertise
- Establishment of advanced test bed systems against which industry can develop systems and verify performance

Spin-off Companies

One measure of the Laboratory's contribution to the nation's economy is its success in transferring technology to spin-off companies. Since the Laboratory's inception, 106 high-technology companies have evolved from the Laboratory's technology development. These companies' services and products range from multimedia software services to advanced semiconductor lithography. The spin-off companies are large organizations such as MITRE, a not-for-profit research and development corporation, and small businesses such as SimSpace, a cybersecurity consulting firm, and are found not only in Massachusetts but also in states beyond.

Notable Spin-off Companies

American Power Conversion Corporation
Arcon Corporation
Computer Corporation of America
Copious Imaging
Digital Equipment Corporation
Janis Research Company
Kenet, Inc.
Kopin Corporation
MITRE Corporation
NanoSemi, Inc.
Photon Spot, Inc.
SimSpace

Tyco Laboratories, Inc.
Wavesense
Worldwide Incident Command Services, Inc.

Patents

Lincoln Laboratory has contributed to the nation's and the world's technical knowledge base through the U.S. patents issued for its technologies. Laboratory technical innovations licensed to industry have enabled many commercial-sector applications, from air traffic management systems to semiconductor processing to biological-agent sensors. Since 1951, approximately 1,127 U.S. patents have been issued for advancements and inventions developed by Lincoln Laboratory researchers.

Subcontracts with Business and Universities

Lincoln Laboratory contracts with companies to design and fabricate developmental hardware and material. The technical expertise developed by companies during the Laboratory-funded proof-of-concept phase is carried forward to the production phase. Often, this prototype work results in business for companies who later produce the hardware or material commercially. The Laboratory also contracts with universities for basic and applied research; the collaborations forged through these partnerships promote the exchange of technology and knowledge.

Cooperative Research & Development Agreements and the Small Business Technology Transfer Program

Lincoln Laboratory engages in a limited number of Cooperative Research and Development Agreements (CRADAs) and Small Business Technology Transfer Program (STTR) arrangements. Both these arrangements are mechanisms for increasing interactions with industry, thus promoting mutual knowledge exchange

and technology transfer, and benefiting both partners by providing them with R&D they might not readily accomplish within their budgets and facilities.

Technologies investigated through these arrangements are those consistent with the Laboratory's defined mission areas and are frequently ones that enable advancements to processes and devices.

For more information about working with Lincoln Laboratory, visit the website at <https://www.ll.mit.edu/partner-us>



Collaborations with MIT Campus and Other Universities

Research

Research collaborations foster knowledge exchange between universities and Lincoln Laboratory, strengthen the research conducted at all partnering institutions, and enhance the professional development of participating scientists and engineers. Multiple mechanisms support these collaborations; some of them are highlighted here.

Beaver Works

Beaver Works, a joint venture between Lincoln Laboratory and the MIT School of Engineering, was established as an incubator for innovative research. Beaver Works facilitates project-based learning, a hallmark of an MIT education, and leverages the expertise of MIT faculty, students, and researchers, and Lincoln Laboratory staff to broaden research and educational partnerships. By encouraging collaborative projects, Beaver Works strengthens the potential of both institutions to make an impact on global problems.

The Beaver Works center near MIT campus provides facilities for various educational activities: areas for collaborative brainstorming; workshops and tools for the fabrication of prototype systems; and space for classroom-style instruction. Beaver Works supports student involvement in a broad range of research and educational pursuits, including two-semester, course-based capstone projects; joint and individual research initiatives; and Undergraduate Research Opportunities Program internships.

Center for Quantum Engineering

The MIT Research Laboratory of Electronics (RLE) and Lincoln Laboratory launched the Center for Quantum Engineering, which is housed at RLE on the MIT campus. Quantum engineering is bridging the traditional fields of computer science, mathematics, physics, and engineering. The center will unite the expertise, infrastructure, and resources of the Laboratory and the MIT campus to explore the development of quantum science and its application to quantum technologies. Such technologies could transform cyber security, drug discovery, machine learning, communications systems, magnetometry, and navigation.

Advanced Concepts Committee

The Lincoln Laboratory Advanced Concepts Committee (ACC) supports the development of innovative concepts that address important technical problems of national interest. Collaborative efforts between Lincoln Laboratory and MIT's research laboratories are encouraged. The ACC provides seed funding, as well as technical and programmatic support, to investigators with new technology ideas.

Advanced Education

MIT Independent Activities Period Courses

Lincoln Laboratory technical staff develop and lead activities offered during MIT's Independent Activities Period (IAP), a four-week term spanning the January semester break. Under the IAP program, for-credit classes are available for registered MIT students, and noncredit activities are open to all members of the MIT community. IAP offerings range from academic seminars to hands-on engineering projects to artistic pursuits. The activities are, as the IAP website states, "distinguished by their variety, innovative spirit, and fusion of fun and learning." Lincoln Laboratory staff

have offered courses in radar design, robotics, imaging technologies, laser systems, and supercomputing.

MIT Professional Education—Short Programs

Lincoln Laboratory is collaborating on courses offered through MIT's Professional Education Short Programs. Short Programs usually run during the summer and bring participants from industry, government, and business to the campus for intensive, week-long courses designed to expand participants' familiarity with emerging technologies. Through this recent partnership, technical staff members from the Laboratory have co-led courses on radar and laser radar design.

Technical Seminar Series

Members of the technical staff at Lincoln Laboratory present seminars to interested college and university groups. The currently available seminars from which interested university groups can choose include ones in air traffic control, radar and signal processing, solid-state devices and materials, cyber security, communications systems, and space control technology.

Visit the web at <https://www.ll.mit.edu/careers/student-opportunities/technical-seminar-series>

Military Fellows Programs

Lincoln Laboratory provides fellowships to active-duty U.S. military officers who are enrolled in a graduate school program, often at MIT, or are completing requirements for advanced education at Senior Service Schools or the U.S. Army's Training with Industry (TWI) program. For graduate students, the military fellowships cover tuition and fees and require that the students perform thesis research at Lincoln Laboratory. Officers enrolled in a Service School program do research at the Laboratory while taking courses in

national security management at MIT. Officers in the TWI program work full time in a Lincoln Laboratory group that specializes in areas that complement the officers' careers.

For more information on the Military Fellows Programs, visit the web at <https://www.ll.mit.edu/careers/programs-military-officers>

MIT Undergraduate Research Opportunities Program

Lincoln Laboratory is one of the centers with which undergraduates may partner under MIT's Undergraduate Research Opportunities Program (UROP). UROP cultivates research partnerships between MIT undergraduates and faculty, offering students the chance to work on cutting-edge research and participate in each phase of standard research activity.

MIT Undergraduate Practice Opportunities Program

Lincoln Laboratory participates in MIT's Undergraduate Practice Opportunities Program (UPOP). This full-year program for MIT sophomores is an introduction to the workplace skills that complement students' academic training. An important facet of the program is a 10- to 12-week summer internship in industry, government, or a nonprofit institution. As a UPOP partner, the Laboratory offers a limited number of such internships.

MIT 6-A Master of Engineering Thesis Program

Lincoln Laboratory is a partner of MIT's Department of Electrical Engineering and Computer Science 6-A Master of Engineering Thesis Program, which matches industry mentors with undergraduate students. Students in the 6-A program spend two summers as paid interns, participating in projects related to their fields. Then, the students move on to developing their master of engineering theses under the supervision of both Laboratory engineers and MIT faculty.

MIT Research Assistants

As part of the research collaboration between MIT campus and Lincoln Laboratory, MIT graduate students are supported as research assistants while working on Laboratory programs.

University Cooperative Education Program

Technical groups at Lincoln Laboratory employ students from MIT, Northeastern University, and other area colleges as co-ops working full time with mentors during the summer or work/study semesters and part time during academic terms.

Summer Research Program

Lincoln Laboratory offers undergraduate and graduate students the opportunity to gain hands-on experience in a leading-edge research environment. Program participants contribute to projects and gain experience that complements their courses of study. Each summer, the Laboratory hires, on average, approximately 200 paid interns from top universities.

WPI Major Qualifying Project Program

Lincoln Laboratory collaborates with Worcester Polytechnic Institute (WPI) in its Major Qualifying Project (MQP) program, which requires students to complete an undergraduate project equivalent to a senior thesis. Students participating in the program spend nine weeks during the fall term working on their projects full time at Lincoln Laboratory.

National GEM Consortium Fellowships

Through collaborations with universities and businesses, the National Consortium for Graduate Degrees for Minorities in Engineering and Science

(GEM) provides support to students from underrepresented groups who are seeking advanced degrees in science and engineering fields. Lincoln Laboratory, as a GEM partner, offers paid summer internships to students who are pursuing graduate studies through the GEM Fellowship Program, which is committed to increasing the number of science and engineering students nationwide.

For more information on student programs, visit the web at <https://www.ll.mit.edu/careers/student-opportunities>



Workshops and Technical Education

Lincoln Laboratory hosts annual conferences, workshops, and seminars that bring together members of technical and defense communities to share advancements and ideas. These events foster a continuing dialogue that enhances technology development and provides direction for future research.

Workshops at Lincoln Laboratory

A2/AD Systems and Technology Workshop

The workshop provides an overview of anti-access/area denial (A2/AD) challenges facing the Department of Defense and the intelligence communities. Laboratory presenters and invited guest speakers examine systems, tactics, and technologies to counter emerging A2/AD threats. Topics under discussion may include base and fleet defense, contested airspace, space control, cyber warfare, communications, and intelligence, surveillance, and reconnaissance (ISR) architectures and systems,

Advanced Prototype Engineering Technology Symposium

The symposium is an opportunity for engineers and system developers to discuss developments in advanced integrated analysis and testing, additive manufacturing, advanced materials, and optical testing.

Advanced Research and Technology Symposium

The symposium is designed to showcase innovative technologies developed at Lincoln Laboratory and in partnership with MIT researchers. Themes each

year reflect current and evolving areas of research and development. The symposium consists of short talks, interactive poster sessions, and keynote lectures in each of the theme areas.

Advanced Technology for National Security Workshop

This forum helps architects of government systems to understand how new technology can have a profound impact on future systems critical to national security.

Air, Missile, and Maritime Defense Technology Workshop

This workshop provides an overview of current developments in areas such as air, missile, and maritime defense elements, air and missile defense architectures, advanced concepts and technology, test infrastructures, and intelligence capabilities.

Air Vehicle Survivability Workshop

The workshop presents the air vehicle survivability community with an update on recent analysis and testing, and provides a forum for relevant briefings from active members of this community.

Cyber Technology for National Security

This forum discusses the latest research, prototyping, assessment, and operational uses of cyber technology in the interest of national security, with a focus on military and national mission systems. The program includes talks, demonstrations, and keynote addresses.

Defense Technology Seminar

This weeklong seminar focuses on technologies for the warfighter. Major sessions are devoted to air defense and space situational awareness. New national security challenges in counterinsurgency warfare, homeland security, and network-centric operations are part of the discussion.

Homeland Protection Workshop Series

This series' workshops cover three topics: chemical, biological, and explosive defense; air, borders, and maritime security; and incident response and disaster management.

Human Language Technology and Applications Workshop

Users and developers of human language technologies come together to share ideas on technical challenges and lessons learned from applying human language technology to U.S. government applications.

Human-Machine Collaboration for National Security Workshop

This workshop offers sessions in human-in-the-loop experimentation, human science, artificial intelligence, and human-machine interfaces. Technical presentations given by speakers from government, federal labs, academia, and commercial companies cover a range of applications.

Intelligence, Surveillance, and Reconnaissance Systems and Technology Workshop

This national forum is an opportunity for system developers and operational users to present and discuss technology developments and new system concepts in intelligence, surveillance, and reconnaissance.

Lincoln Laboratory Communications Workshop

The two-day workshop offers users, developers, and researchers of Department of Defense (DoD) communication systems the opportunity to exchange ideas on current trends and technical challenges in developing future DoD communication architectures.

Recent Advances in Artificial Intelligence for National Security

The RAAINS workshop focuses on emerging state-of-the-art challenges, responsibilities, opportunities, and

concerns in applying artificial intelligence (AI) to national defense. The workshop showcases several examples of significant progress in applying AI and will provide a glimpse into future directions that promise to have a profound impact on national security.

Space Control Conference

This longstanding conference brings together the space control community to address current capabilities, future needs, and technology development.

Attendance at workshops and seminars at Lincoln Laboratory is by invitation; participants must complete and submit the Laboratory's security authorization form.

For information on upcoming workshops at Lincoln Laboratory, visit the web at <https://www.ll.mit.edu/conferences-events>

Offsite Workshops

The Laboratory also coordinates offsite workshops with partnering organizations. Laboratory involvement may be co-chairmanship of events, technical leadership of sessions, or co-sponsorship of workshops.

Air Traffic Control Workshop

The workshop, held at the Federal Aviation Administration's headquarters in Washington, D.C., brings together speakers from Lincoln Laboratory, government, industry, academia, and federally funded research and development centers to present research on advanced concepts, technology, and systems development supporting the Next Generation Air Transportation System.

IEEE High Performance Extreme Computing Conference

IEEE hosts the High Performance Extreme Computing Conference that is traditionally held in September in Waltham, Mass. Lincoln Laboratory serves as the technical

organizer for this forum that fosters dialog among members of the computing community.

Cyber Endeavour Workshop

Cyber Endeavour is a multi-day event exploring critical cyber challenges and potential solutions. The workshop consists of a Leadership Symposium at which authorities from the government, military services, academia, and industry discuss current issues and the Cyber-X Games in which participants attempt to solve cybersecurity problems through interactive gaming. Lincoln Laboratory assists with the infrastructure and environment for the cyber warfighter training part of the Cyber-X Games.

IEEE International Symposium on Technologies for Homeland Security

This symposium, hosted by IEEE and held in the Greater Boston area, brings together innovators from academia, industry, Homeland Security Centers of Excellence, and government to discuss novel concepts for protecting the nation and to review experimental results of new programs.

Technical Education Courses—Invited

Lincoln Laboratory presents technical courses designed for military personnel and government-employed civilians. These by-invitation courses typically run from three to five days and include seminars and tours at the Laboratory's specialized facilities.

Ballistic Missile Defense (BMD) Technology

The BMD Technology course provides an understanding of BMD systems concepts and technologies to military officers and DoD civilians involved in BMD systems development and acquisition.

Introduction to Intelligence, Surveillance, and Reconnaissance (ISR) Systems and Technology

This course introduces DoD civilians and military officers to the fundamentals of ISR systems and platforms, and data processing, exploitation, and dissemination. The three-day course was developed in response to the critical role ISR plays in military conflicts abroad and in homeland defense.

Introduction to Radar Systems

This course has been developed to provide an understanding of radar system concepts and technologies to military officers and DoD civilians involved in radar system development and acquisition.

Networking and Communications

Through lectures, demonstrations, and tours, the course provides fundamentals and advanced concepts of networks and communications systems for military officers and DoD civilians.

Technical Education—Online Courses

Lincoln Laboratory online courses consist of video lectures and accompanying PowerPoint lecture notes and charts.

Adaptive Antennas and Phased Arrays

The 16 lectures in this course cover both theory and experiments; lectures 1 to 7 discuss adaptive antennas, and the remaining nine lectures are on phased arrays.

Introduction to Radar Systems

This ten-lecture video course was excerpted from the three-day radar course listed above.

To learn more about the video courses, visit the web at <https://www.ll.mit.edu/outreach> and search for online STEM courses



Community Outreach

Lincoln Laboratory Community Outreach (LLCO) encourages community service and promotes K–12 education through a variety of initiatives, some in cooperation with the MIT Public Service Center.

Educational Outreach

Lincoln Laboratory Educational Outreach by the Numbers

23	200	820	12,000
K–12 STEM programs	Scientists and engineers volunteering as mentors, speakers, or tour guides	Hours per year supporting STEM programs	Students seeing STEM demonstrations at Lincoln Laboratory and in area schools

Lincoln Laboratory Radar Introduction for Student Engineers
Lincoln Laboratory Radar Introduction for Student Engineers (LLRISE) is a two-week residential program for high-school students entering their senior year. The program includes instructional sessions on the basics of radar systems and radar imaging; workshops to build radar systems that can perform range-Doppler imaging; and hands-on exercises using the radars built in the workshops. During the two weeks, students are housed in a dormitory at MIT and attend sessions on campus to learn more about the college application and financial aid processes.

Science on Saturday

Laboratory technical staff give lively, interactive demonstrations for local-area students, their parents, and teachers. These popular events have ranged from hands-on engineering activities, such as building gumdrop towers, to demonstrations on the “magic” of chemistry, lasers and optics, and computers. Annually, about 3000 people attend these sessions offered four times during the school year.

Robotics Outreach at Lincoln Laboratory (ROLL)

ROLL takes advantage of the current popularity of robotics to interest K–12 students in science and technology. ROLL is sponsoring teams in the FIRST (For Inspiration and Recognition of Science and Technology) competitions, hosting robotics workshops at the Laboratory, and providing technical mentors to local-area schools and groups. More than 135 students have recently participated on 16 Laboratory-mentored teams.

CyberPatriot / Capture the Flag

Laboratory staff mentor and coach the students participating in the CyberPatriot and Capture the Flag competitions, teaching them the basics of cyber security. The goal of both programs is to encourage students to enter the computer science field. CyberPatriot is a nationwide Air Force program and competition that teaches high school students defensive computer security. In CyberPatriot, students delve into various exercises to learn how to identify malware, “clean” a computer system, and establish a secure network in a simulated corporate network setting. The Capture the Flag competition covers a wide variety of real-world cyber security skills, ranging from identifying flaws in cryptographic algorithms to recovering forensic artifacts of a damaged hard drive.

LLCipher

The Lincoln Laboratory Cipher is a one-week workshop that presents high-school students with an introduction to modern cryptography—a math-based approach to securing data. Lessons in abstract algebra, number theory, and complexity theory provide students with the foundational knowledge needed to understand theoretical cryptography. Students then construct provably secure encryption and digital-signature schemes.

MIT Office of Engineering Outreach Programs

Lincoln Laboratory is collaborating with MIT’s Office of Engineering Outreach Programs (OEOP), which runs four enrichment programs for either middle- or high-school students. These programs are aimed at encouraging students, particularly in underserved populations, to pursue careers in science, technology, engineering, and math.

Armed Forces Communications and Electronics Association (AFCEA) International Program

Lincoln Laboratory participates in an AFCEA educational program by providing two summer employment internships for graduating high-school seniors interested in science, technology, math, and engineering.

High-School Internship Programs

Lincoln Laboratory has established learning affiliations with Minuteman Regional High School and Shawsheen Technical Vocational High School. Under these programs, Lincoln Laboratory annually will make available one-semester internships for high-school seniors from the schools.

Ceres Connection

Since 2001, Lincoln Laboratory, in partnership with the Society for Science & the Public, has promoted science education through its Ceres Connection program,

which names minor planets in honor of students in fifth through twelfth grades and their teachers. Each year, approximately 250 students and teachers are selected through the science competitions sponsored by the Society for Science & the Public.

Engineering Workshops for Girls

Lincoln Laboratory promotes education in science, technology, engineering, and math through its workshops for girls run by volunteers from Lincoln Laboratory’s technical staff. Staff members direct all-day, engineering immersion workshops for 50 to 100 middle- or high-school-age girls.

Community Service and Giving

Lincoln Laboratory Giving by the Numbers

25	Charities benefited from giving programs
150+	Care packages sent annually to overseas deployed troops
500+	Toys donated annually to Toys for Tots drive
\$1,300	Raised by the Laboratory Community to assist veterans at the Bedford Veterans Hospital
\$5,211	Donated to the American Heart Association in in the past year
\$36,925	Raised by the Laboratory’s TeamWalk for CancerCare Team since 2010
\$110,792	Contributed to the Jimmy Fund by Laboratory cyclists in the Pan-Mass Challenge
\$206,175	Raised by Laboratory employees to support favorite causes over the past year
\$549,283	Raised by the Laboratory’s Alzheimer Support Community since 2009

MIT LL Alzheimer's Awareness and Outreach

This informal volunteer group provides support and useful information to fellow employees who are experiencing the significant impact Alzheimer's disease has on individuals and families. They also raise funds to benefit the Massachusetts/New Hampshire chapter of the Alzheimer's Association, which supports research into the disease, patient care, and awareness programs. The Laboratory teams that participate in the summer Alzheimer's Breakthrough (bicycle) Ride and the September Walk to End Alzheimer's are consistently among the region's most successful fundraisers.

Food and Clothing Drives

The LLCO runs food and clothing drives that support local charities. Food items are distributed to food pantries in the area, and clothing is given to a number of shelters and the Salvation Army.

Support Our Troops

Lincoln Laboratory runs an ongoing campaign of support for deployed U.S. troops. Donations of food, toiletries, books, and games are collected daily, boxed by volunteers, and mailed weekly. In addition, the program has sent care packages to the children of villages in Afghanistan and Iraq where U.S. troops are serving.

The Holiday Giving Tree

During the winter holiday season, Laboratory employees donate gifts to area residents affected by the economic downturn. The gifts are distributed by Somebody Cares, a national charitable organization with affiliates in the region.

Marshallese Outreach

The Marshallese Outreach program was developed to enrich educational and life experiences of the people of the Marshall Islands, particularly those from Kwajalein Atoll, where Lincoln Laboratory staff work as scientific advisors to the Reagan Test Site located there.

United Way

Lincoln Laboratory participates in MIT's annual United Way campaign that raises funds to aid local human-service agencies that provide assistance to families in need and operate programs to help children and young adults having difficulties in school and at home.

Veterans' Support

The Lincoln Laboratory Veterans' Network (LLVETS) not only offers support to employees who are transitioning to the Laboratory directly from the military, it also engages in outreach to local active-duty troops and veterans' organizations. For example, LLVETS supports the efforts of the Wounded Warrior Project, which helps injured servicemen and women deal with physical, emotional, and financial challenges, and Fisher House, which makes housing available to families of soldiers being treated at medical centers.

For more about the educational and community service programs of the LLCO, visit the web at <https://www.ll.mit.edu/outreach>

Contacts

Main Address and Telephone

Lincoln Laboratory
Massachusetts Institute of Technology
244 Wood Street
Lexington, MA 02421-6426
Phone: 781-981-5500
<https://www.ll.mit.edu>

Human Resources

Phone: 781-981-7066

College Recruiting Program Administrator

Phone: 781-981-2465
Email: collegerecr@ll.mit.edu

Communications and Community Outreach Office

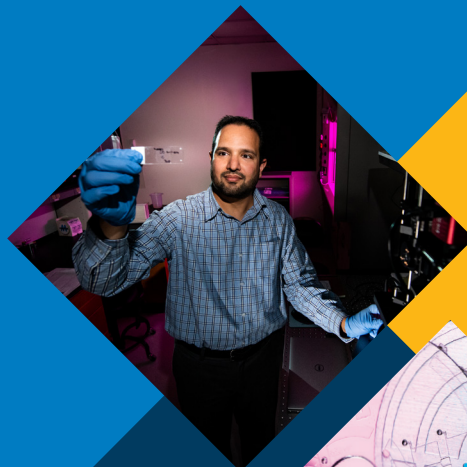
Phone: 781-981-4204
Email: llnews@ll.mit.edu

Technology Transfer

Lincoln Laboratory Technology Ventures Office
Email: tvo@ll.mit.edu
Phone: 781-981-7008

MIT Technology Licensing Office

Phone: 617-253-6966
<https://innovation.mit.edu/resource/technology-licensing-office/>



Follow MIT Lincoln Laboratory online

Facebook: MIT Lincoln Laboratory

LinkedIn: <http://www.linkedin.com/company/mit-lincoln-laboratory>

Twitter: @MITLL

YouTube: MIT Lincoln Laboratory

Instagram: https://www.instagram.com/lincoln_laboratory/



www.ll.mit.edu

 **LINCOLN LABORATORY**
MASSACHUSETTS INSTITUTE OF TECHNOLOGY